

# **CAPSULE | Olga Buraya-Kefelian**

November 2015

Pattern Errata | Print Book; First Edition

Version 3.0 | Updated December 17, 2015

# NOBU

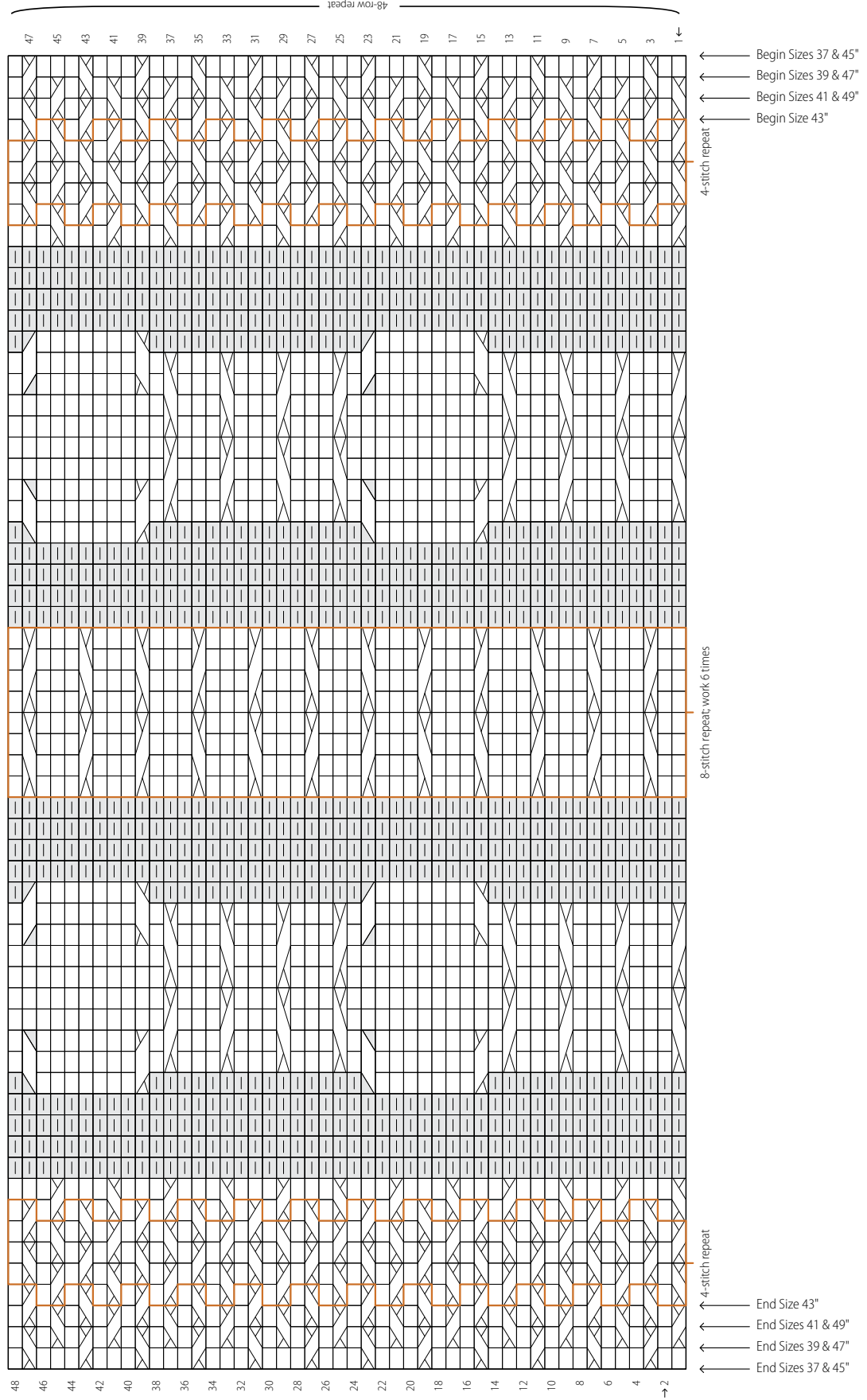
CAPSULE Fall 2015 | Olga Buraya-Kefelian for Brooklyn Tweed

(First Edition, October 2015), page 15, Upper Front Chart.

Date of Update: 2 December 2015 [Digital Pattern Version 2.0]

For additional information, see <https://www.brooklyntweed.com/pattern-errata/>

## UPPER FRONT CHART



# TETRAPODS

CAPSULE Fall 2015 | Olga Buraya-Kefelian for Brooklyn Tweed

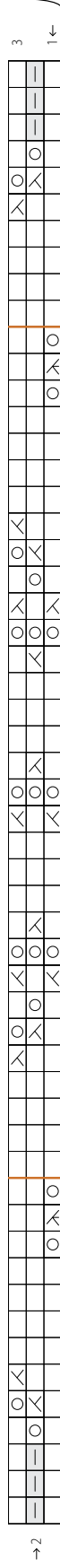
(First Edition, December 2015), page 9, Tetrapods Pattern.

Date of Update: 17 December 2015 [Digital Pattern Version 1.1]

For additional information, see <https://www.brooklynntweed.com/pattern-errata/>

## TETRAPODS PATTERN

Note that only the first 3 rows of the chart are shown here



\* See Construction Notes

**12/17/15 Update:** The bracketed repeat in the original printed chart was listed as a 36-stitch repeat. With this update, the label has been corrected to indicate a 32-stitch repeat. Aside from this label, no changes were made to the actual chart or symbols.